

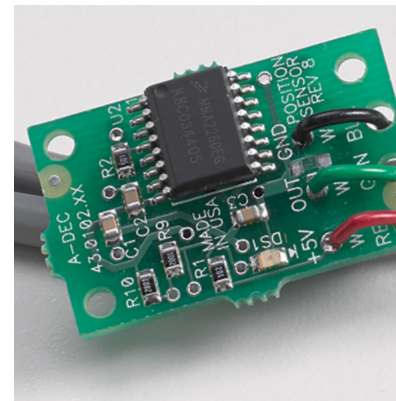
A-dec® 300 CORE

a dec®

The A-dec Difference

Built for Life

At A-dec, no detail is too small, right down to the bolts that go into our products. That's why we manufacture a large majority of our finished dental equipment from raw materials: an essential factor in ensuring quality. Because while these parts may not be visible to the eye, they make the difference in the life, comfort and functionality of each and every product that bears our name. And to your business, that's everything.



Control block – Patented design promotes clean treatment water with every activation.

Lift cylinder – A-dec built and engineered with robust hydraulics and fewer parts.

Chair position sensor – A-dec technology uses precise electronic sensors and digital signals.







A-dec 300 CORE: Evolved

Design

A solid baseplate is the foundation for a sturdy chair. Along with sure footing, the A-dec 300 quietly and smoothly positions patients with a hydraulic lift cylinder that's engineered for a 20 year life.

Value

Designed as a modular solution, A-dec 300 Core is a whole system that lets you pick and choose the features you want, within the price point you need.

Flexibility

Traditional delivery system with ambidextrous Radius® mounting rotates around the front of the chair, meaning handpiece and clinical devices are always within natural reach.

Comfort

Pressure mapped, contoured surfaces and virtual pivot back ensure a relaxed and supported patient experience. Comfortably accommodates patients up to 181 kg. (400 pounds).

Access

While your patient rests comfortably, cradled in a dual-articulating headrest, your access is optimized with a slim profile and ultra-thin backrest. Engineered from years of experience, this combination encourages better positioning for you, while enhancing access to the oral cavity.





Ergonomic and Economic

Who says ultimate comfort isn't attainable? Every patient chair, and dentist or assistant stool we design, is backed by decades of research, dialogue, tests and improvements. We never stop looking at every simple curve, smooth line and inherent contour, to make sure it delivers ultimate efficiency and comfort. Rest assured: The affordable A-dec 300 Core is no exception.

A-dec Quality at an Amazing Price

The **A-dec 300 CORE** dental chair package gives you quality and reliability at an entry level price.
With optional upgrades available.

A-dec 300 CORE Package Specification:

- **A-dec 300 Fully Ambidextrous Chair** with Pressure Mapped Formed Upholstery
- **Fixed Traditional Delivery System** with Standard Touchpad including: 3/1 Syringe, 2 x Midwest Outlets, Acteon Scaler
- **Standard Tray Holder**
- **3-Position Assistant's Arm** with 3/1 Syringe, High and Low Volume Suction and Standard Touchpad
- **Cuspidor** with Spittoon Valve
- **300 Radius Mount LED Light**
- **3-Position Block**

Up to 181kg/28.5st patient weight limit.

Contact your Territory Manager Latest Upgrade Options. a-dec.co.uk/find-a-dealer ▶





Premium Equipment, Premium Warranty

The reliability of A-dec equipment is legendary. Now, it's also backed by the best warranty in the business. Every piece of A-dec core equipment - dental chairs, delivery systems, stools and lights - comes with a 10-Year Warranty for extra peace of mind.

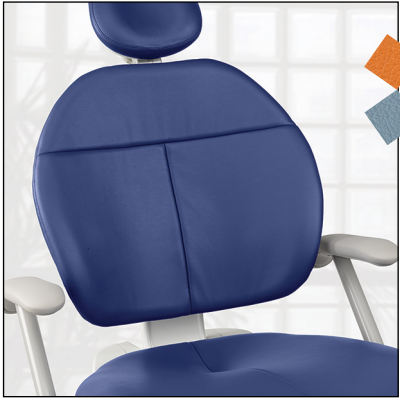


We're pleased to offer A-dec customers a warranty that reflects the confidence we have in our equipment's longevity and high standards of excellence.

- Marv Nelson, A-dec CEO



So Many Choices



Sewn upholstery



Formed upholstery

Upholstery

It all starts with a great chair. You have plenty of options, from plush sewn to easy-to-clean formed upholstery.



Find your perfect colour and order samples. a-dec.co.uk/colour



Traditional

Delivery System

Switch between right or left-handed operators with ease. Single- or dual-Radius mounting rotates delivery system around the front of the chair for better patient access during procedures.



Rotating vitreous china cuspidor

Cuspidor

Optional cuspidor includes timed cup fill and bowl rinse functions.



Standard touchpad



Deluxe touchpad

Touchpad

Fingertip access simplifies chair adjustments and provides quick access to dental light and cuspidor control. Optional deluxe touchpad adds controls for integrated clinical devices such as electric motors, cameras, and scalers.



Disc foot control



3-position holder



4-position holder



A-dec 300 LED



Radius monitor mount



Light monitor mount



Lever foot control



Dual 2-position holder



A-dec 500 LED



Light monitor mount with link arm

Foot Controls

Disc style with chip blower option—or A-dec lever style for precise modulation of electric and pneumatic handpieces.

Assistant's Holders

Place the assistant's clinical devices right where they are needed most. Adjustable 3- or 4-position holders are available as a chair mount, cuspidor mount or telescoping arm.

Dental Lights

Accurate lighting is essential. A-dec LED lights provide balanced intensity and a uniform light pattern without shadows. Automatic on/off when chair moves to entry or exit position.

Monitor Mounts

Consult. Educate. Review. Monitor mounts pivot to accommodate viewing from the seated and supine positions. Tailor your options, including locking style or floating pivot, positioning handle, and multiple mount locations.

Sewn colours in Ultraleather® - contrast stitching comes standard with sewn upholstery.



Formed colours in Dauphine



Find your perfect colour and order samples. a-dec.co.uk/colour

Specifications

A-dec 311 Dental Chair

Range of lift height	349 mm to 800 mm (13.75" to 31.5"); Low point 375 mm (14.75") when dual mounting
Thin flexible backrest	32 mm (1.25"), formed
Drive system	Hybrid drive (electromechanical tilt, hydraulic base)
Chair back and base stop switch	Yes, stops downward movement when obstruction is detected
Headrest	Dual-articulating and gliding (knob style)
Integrated 300-watt power supply	Yes
Foot switch	Optional
Mounting capability	Radius (single or dual mounting)
Upholstery options	Sewn or formed

A-dec 300 CORE Delivery System

	A-dec 336 Traditional
Control block	Standard 3-position
Left/right conversion	Yes
Tubing options	Vinyl
Handpiece holder positions	4
Touchpad options	Standard or deluxe
Quad-voltage intraoral light source	Optional
Foot control	Standard, chip blower or lever
Arm system	Manual height adjustment A-dec 336 - Radius mount

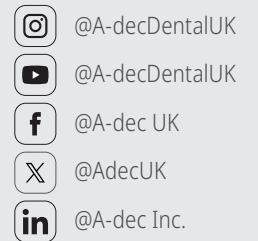






Reliable Creative Solutions

FOR DENTAL PROFESSIONALS WORLDWIDE



MORE THAN A WARRANTY. IT'S A COMMITMENT.

At A-dec, our focus is on making dentistry better—which includes superior customer service along with superior dental products. Your A-dec operatory equipment is backed by a ten-year warranty, and a lifetime of customer support. We'll be here today, tomorrow, and well into the future. That's our commitment to you.

For complete details, including exclusions, visit: a-dec.co.uk/legal/warranty

Any colours and products shown may vary and are subject to change without notice. Contact your authorised A-dec dealer for the most current product information. All trademarks in this document are subject to the trademark rights of A-dec, its affiliates, and their collective suppliers in the United States and foreign countries.

©2025 A-dec Inc. All rights reserved. 85.1082.25/Lithgo/2M/3-27/Rev A

A-dec Headquarters

2601 Crestview Drive
Newberg, Oregon 97132 USA

P: 1.800.547.1883 within USA/CAN
P: +1.503.538.7478 outside USA/CAN

A-dec United Kingdom

Tel: 0800.233285 within UK
Tel: +44.(0).24.7635.0901 outside UK

a-dec.co.uk

