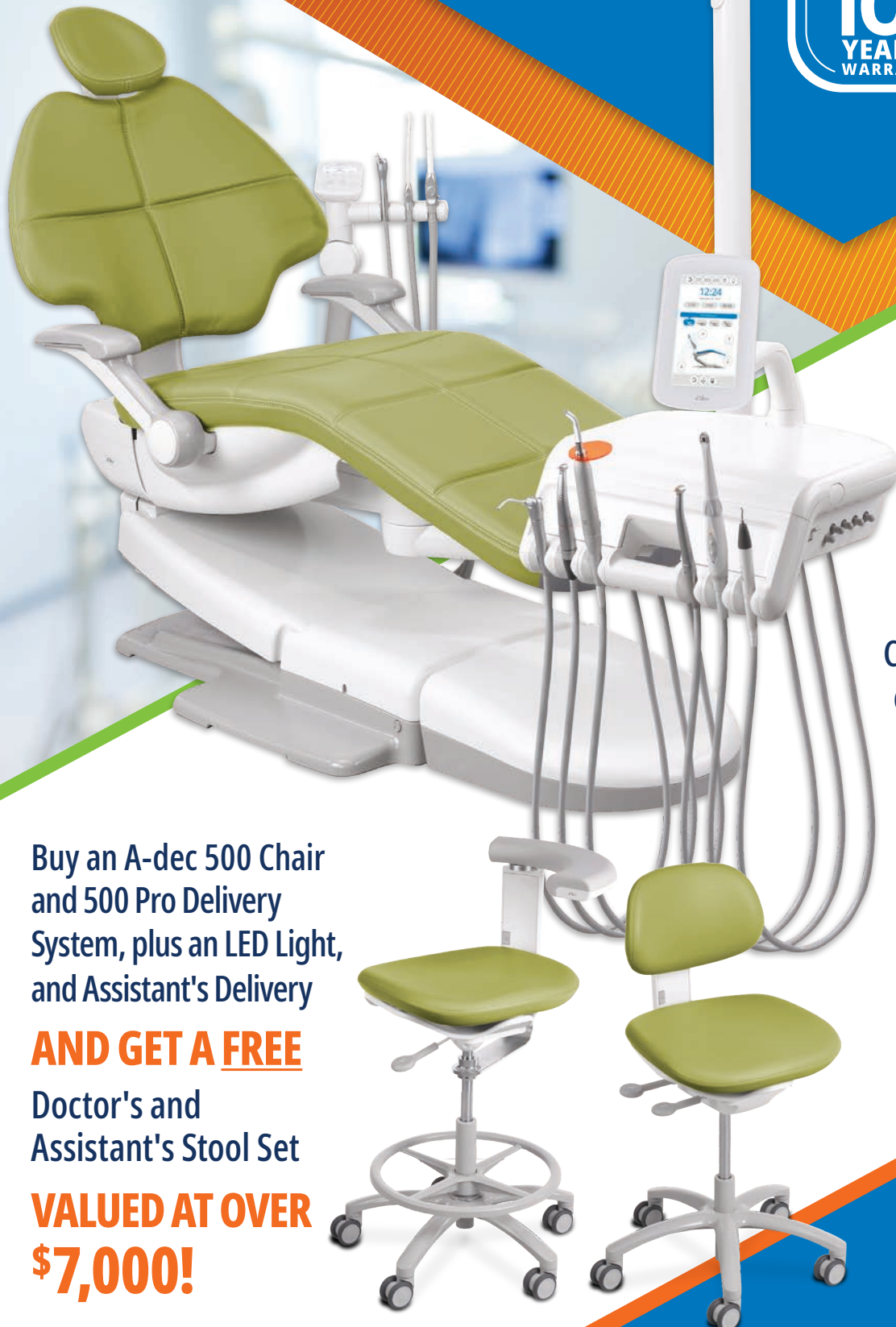


APRIL-JUNE 2026

AMAZING AUTUMN DEALS!



EVEN MORE

Great package
deals inside!

DISCOVER

Our new products

DREAM IN 3D

Customise your space,
colours & equipment.
Scan the QR below.



Buy an A-dec 500 Chair
and 500 Pro Delivery
System, plus an LED Light,
and Assistant's Delivery

AND GET A FREE

Doctor's and
Assistant's Stool Set

**VALUED AT OVER
\$7,000!**

a|dec[®]



A-dec 500 Pro

Premium A-dec performance connectivity and integration. Expand your practice possibilities while your patients enjoy superior comfort.

Buy a Chair Package* and

GET A FREE STOOL SET



A-dec 300/400 Pro

The **300** is a compact dental chair that's comfortable and built to last, while the **400** combines contemporary styling with robust construction

Buy a 300 or 400 Chair Package* and

GET A FREE STOOL SET

PLUS
 BUY ANY CHAIR PACKAGE ABOVE
 And receive a **FREE**
 A-dec Flush Dock &
 box of ICX Renew
VALUED AT \$594

500 STOOLS Ultimate Comfort and Support

The A-dec 500 Doctor's and Assistant's stools offer a dynamic seating system that conforms and moves with the body. With years of research behind it, the innovative A-dec 500 stool is strategically engineered to help you feel your best, so you can perform at your best.

- Dynamic support.
- Healthy seated posture.
- Easily adjusted.



FLUSH DOCK Specialised Simplicity

The holder keeps handpieces and A-dec syringes in place so you can flush, purge, and follow waterline protocols with your hands free. The syringe pocket is shaped to press and hold the A-dec syringe water button. The handpiece slots fit a wide range of tubing nuts and ends. The removable top makes cleaning simple. The lid provides room for two traditional syringes or one Continental® syringe, plus four handpiece slots when all handpieces, motors, and couplers are removed for flushing.



ICX RENEW Fast and Effective

Fast-acting ICX Renew liquid shock treatment removes odour and foul-tasting bacteria in dental unit waterlines. Just mix the two solutions together into an empty water bottle, run through the lines, and soak overnight.

- Penetrates and removes the buildup of odour and foul-tasting bacteria.
- Blue colour lets you know the solution is hard at work in the waterlines.
- Non-corrosive and gentle on equipment
- Will not corrode or clog waterlines.
- Odourless formula.



GREAT 300 PRO DEALS JUST GOT BETTER!

UPGRADE
OPTIONS
AVAILABLE!

INTRO PACKAGE

Includes

- A-dec 311B Pro Compatible Chair for stable, comfortable patient positioning.
- Formed upholstery designed for easy cleaning and long-term comfort.

- A-dec 332 Pro delivery system with CP5 touchpad for straightforward control.
- Three-position control block to manage core handpiece needs.
- 351/S/3 assistant's instrumentation for smooth chairside workflow.
- A-dec 372 LED light to provide clear, consistent illumination.

WAS \$46,890

NOW ONLY \$37,995

SAVE \$8,895

SIMPLIFIED PACKAGE

Includes

- A-dec 311B Pro Compatible Chair with the same ergonomic stability as our Intro Package.
- Formed upholstery for simple maintenance and patient comfort.

- A-dec 332 Pro delivery system with CP5i touchpad for expanded control options.
- Four-position control block including an electric motor for added versatility.
- 551STA assistant's instrumentation for increased workflow efficiency and ease of use.
- A-dec 372 LED light providing bright, reliable chairside visibility.

WAS \$59,945

NOW ONLY \$48,775

SAVE \$11,170

FITS TODAY, FLEXIBLE TOMORROW

The A-dec 300 dental chair features a robust build, excellent access, and minimal maintenance in a compact design. Combined with the A-dec 300 Pro delivery system enabled with A-dec+ you'll have just what you need for the way you practice today.

With more possibilities
for tomorrow.



TERMS AND CONDITIONS: Chair package configurations cannot be changed. Free A-dec 500 and 400 stools packages are not available with 300 Pro Intro or Simplified packages.

Contact your dealer for limited ancillary and upgrade options. This offer cannot be combined with any other chair promotion. Offer Valid 1st April - 30th June 2026. All Prices Include GST.

NEW!

A-DEC 343 PRO CART



OUR MOST CONVENIENT & COMPACT DELIVERY SYSTEM!

Ideal for both general and specialised practices, the A-dec 343 Pro dental cart delivery system is configurable for your unique needs. And with its smooth, dynamic height adjustment, you can easily move from sitting to standing for all-day comfort as you work.

- Clinical product integration from electric motors to intraoral scanners.
- Dynamic height adjustment changes to fit your working position.
- Gateway compatibility enables the A-dec+ software platform.

PRICED FROM **\$17,680**

Contact your Territory Manager for further details

PIEZON®
THE ONE AND ONLY NO PAIN SCALER

EMS⁺



NO PAIN Module



PIEZON® Handpiece

PIEZON® PS NO PAIN Instrument

With PIEZON® NO PAIN technology, power transmitted to the instrument automatically increases to remove the calculus effectively leading to maximised patient comfort. It can be seamlessly integrated into your A-dec Delivery System.

*Purchase an EMS Scaler Kit with an A-dec Delivery System, receive a FREE Analogue Connectivity Kit valued at \$352.

		SPECIAL PRICE	SAVE
EM-FS-438	NO PAIN Kit†	\$3,753	\$554
EM-FS-437	NO PAIN Kit LED†	\$5,274	\$654
EM-EN-041	Universal Handpiece	\$899	\$1,481

READY TO LEARN MORE?

Talk to our experts. Your A-dec Territory Manager is here to answer your questions and ensure you get the best solution for your dental practice. Scan the QR code to contact your Territory Manager or A-dec Dealer today.

